



Operating instruction SR 580 Helmet with visor

General information

SR 580 together with the fan unit SR 500/SR 500 EX/SR 700 and approved filters are included in the Sundström fan-assisted respiratory protective device system conforming to EN 12941/EN 12942:1998 class TH3.

Combination of SR 580-SR 500 EX is especially designed for use in potentially explosive and fire hazardous environments. See user instructions or label on fan unit for classification.

The SR 580 together with compressed air attachment SR 507 and compressed air supply tube SR 358/SR 359/SR 360 are included in the Sundström compressed air-fed respiratory device system conforming to EN 14594:2005 class 3A/3B.

This combination gives you a continuous flow compressed air-line breathing apparatus.

When selecting the equipment there are some factors that should be taken into account:

- Potentially explosive atmosphere
- Type of pollutants
- Concentrations
- Work intensity
- Protection requirements in addition to respiratory protective device.

The helmet must only be used when carrying out work it is intended for. It provides limited protection by reducing the force of falling objects that strike or penetrate the top of the helmet shell. The risk analysis should be carried by a person who has suitable training and experience in the area.

Risk analysis should be carried out by a person who has suitable training and experience in the area.

Limitations

When working in explosive environments all parts of the equipment have to be EX-approved. When changing spare parts and accessories you must check that these are EX approved for work in potentially explosive environments.

Instructions for use for SR 580 should be read before use.

2.1 Unpacking SR 580

2.2 Packing list



Check that the equipment is complete as shown on the packing list and that it have not been damaged during transit.

Packing list

- Helmet
- Lower visor frame
- Visor
- Face seal
- Breathing hose
- User instructions
- Cleaning tissue

2.3 Assembly

Face seal and visor



Assembly of the face seal and visor does not require any tools.
Do the following:

Fit the face seal on the inner flange in the lower visor frame Start at one side, push the pin upwards and control that the lip is fastened in the lower visor frame.

Push along the face seal frame so it is securely fastened on the lower visor frame. Control that the pin and lip is fastened on both sides



Remove the protective foil covering the visor.

Fit the visor into the lower visor frame. Applying a little water to the seal will make fitting easier



Fit the lower visor frame to the helmet by sliding it into position.

A 'click' indicates that the frame is locked in position



Check that the visor has achieved a full seal around the entire visor frame.



Attach the hooks in the head harness.



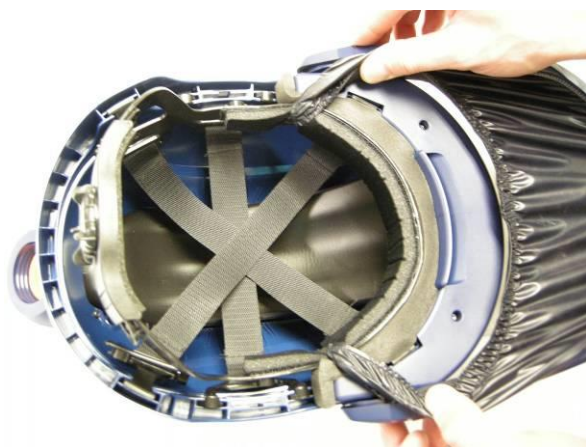
One end of the hose has an $\varnothing 42$ mm thread (fig. 1b/2b), whilst the other is fitted with an O-ring (fig. 1c/2c).



Check that the thread is ok.

The threaded end is to be connected to the helmet.

Putting the helmet on 2.4



Check that the 6-point harness is secured correctly



Raise the visor and put on the helmet



If necessary, adjust the width of the helmet using the knob located at the rear of the harness



To adjust the height of the helmet interior, move the pins between positions a and b.

If the interior is attached to pin a, the helmet will sit lower, and on pin b the helmet will be higher.

To achieve the best fit, this adjustment can be made at both the front and back of the helmet.



Lower the visor by pulling the face seal down below your chin. A 'click' indicates that the visor is fully lowered



Insert a finger inside the face seal and move it along the length of the contact surface to check the fit.



Make sure that the breathing hose runs down your back and is not twisted. You can adjust the angle of the helmet connection as required

Cleaning/disinfecting



Sundström cleaning tissues SR 5226 that clean and disinfect are recommended for daily care.

If the equipment is more heavily fouled, use a soft brush or sponge moistened with a solution of water and washing detergent or the like.

Rinse the equipment and leave it to dry. N.B. Never use a solvent for cleaning.

4.2 Storage

After cleaning, store the equipment, dry and clean, at room temperature. The SR 580 should be stored with the visor either fully raised or fully lowered. Keep out of direct sunlight.

Maintenance schedule

	Before use	After use	Annually
Visual inspection	•	•	•
Performance check	•		•
Cleaning/disinfection		•	•
Replacement of hose O-ring			•
Replacement of gasket in helmet			•
Replacement of exhalation membrane			•

The following schedule shows the minimum maintenance procedures required in order to ensure that the equipment is always in functional condition.

At the first signs of wear, impact marks, damage or aging of the material, the helmet shell or harness must be replaced in order to ensure the protective ability of the helmet is maintained. This must be checked on a regular basis.

A helmet that shows signs of damage, e.g. cracks or scratches that may reduce its protective ability must be discarded. The helmet must also be discarded if it has been exposed to stresses during an accident or near accident, even if there is no visible damage.

4.4.1 Replacement of exhalation membrane



The exhalation membrane is fitted on a pin inside the valve cover. The cover must be replaced at the same time as the membrane. Do the following:

Remove the valve cover from the valve seat



Pull out the membrane.



Check and, if necessary, clean the seal groove in the valve seat.



Press the new membrane securely on the pin. Carefully check that the membrane is fully in contact with the valve seat.



Press the valve cover firmly back into position. A 'snap' indicates that it is locked in position.

Replacement of visor



No tools are required to replace the visor. Do the following:

Unhook the face seal from the harness



Remove the lower visor frame



Remove the visor.



Remove the protective foils from the new visor.



Fit the visor into the lower visor frame. Applying a little water to the seal will make fitting easier



Fit the lower visor frame to the helmet by sliding it into position. A 'click' indicates that it is locked in position



Check that the visor has achieved a full seal around the entire visor frame.



Attach the hooks in the harness

4.4.3 Replacement of face seal



The face seal plastic frame has a groove in which a flange on the lower visor frame fits. The frame locks into position using two pins – one at either end - , which fit into a hole in the visor.

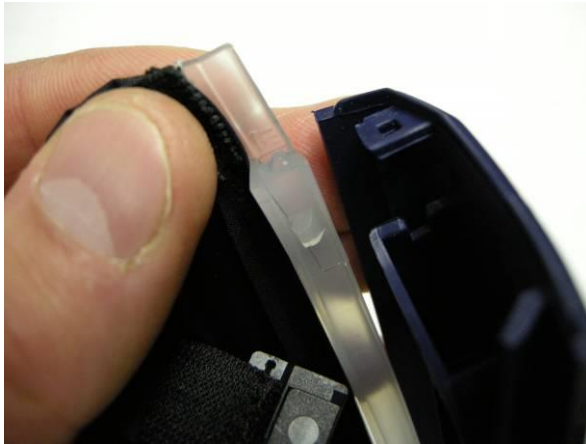
The face seal covering has hooks at either end that attach to the head harness.

Do the following:

Unhook the face seal from the head harness



Remove the lower visor frame



Unfasten the face seal by pulling its frame until the pins release from the holes in the visor.

Remove the face seal.



Fit the new face seal in the inner visor flange with the centre markings aligned.

Press the face seal frame down so that the pins lock into the holes in the visor. A 'click' indicates that they have locked in position.



Fit the lower visor frame to the helmet by sliding it into position. A 'click' indicates that it is locked in position.



Attach the hooks in the head harness

Replacement of sweatband



The sweatband is attached to the forehead strap by a Velcro tape.

Do the following:
Unhook the face seal from the head harness



Remove the sweatband.



Fit the Velcro tape with the rough side towards the forehead strap and the groove facing upwards.



Attach the face seal hooks in the head harness

Replacement of gasket



The gasket is located inside the helmet

Do the following:
Unscrew the hose from the helmet.



Remove the gasket from the flange.



Fit the new gasket.